

Universe Parameters

Definition

Name:	Sample_B
Description:	This is the first sample universe for PyUnv tests. It uses the pyunv_a database.
Connection:	pyunv_b_connection

General information

Created:	9/23/2009 by peckhda
Modified:	9/23/2009 by peckhda
Comments:	These are comments for the Sample_B universe.
Statistics:	6 Classes
	24 Objects
	8 Tables
	3 Aliases
	5 Joins
	2 Contexts
	4 Hierarchies
	3 Conditions

Strategies

Join strategy:	Smart Matching Column Names (no key info.)
Table strategy:	(Built-in) Standard
Object strategy:	(Built-in) Standard Renaming

Controls

Limit size of result set to:	54321 rows
Limit size of long text objects to:	1234 characters
Limit execution time to:	37 minutes
Warn if cost estimate exceeds:	unchecked

SQL parameters

Query	
Allow use of subqueries:	no
Allow use of union, intersect and minus operators:	no
Allow complex conditions in Query Panel:	no
Cartesian products:	prevent
Multiple paths	
Generate several SQL statements for each context:	no
Generate several SQL statements for each measure:	no
Allow selection of multiple contexts:	no

Links

No links for this universe

**Object List**

**Public Orderinfo**

Orderinfo Id  
Customer Id  
Date Placed  
Date Shipped  
Shipping

**Public Orderline**

Orderinfo Id  
Item Id  
Quantity

**Public Customer**

Customer Id  
Title  
Fname  
Lname  
Addressline  
Town  
Zipcode  
Phone

**Public Item**

Item Id  
Description  
Cost Price  
Sell Price

**Public Stock**

Item Id  
Quantity

**Public Barcode**

Barcode Ean  
Item Id

**Condition List**

**Public Orderinfo**

**Public Orderline**

**Public Customer**

**Public Item**

Expensive  
Cheap

**Public Stock**

OutOfStock

**Public Barcode**

## Hierarchies List

Public Customer  
Public Orderinfo  
Public Orderline  
Public Item

## Tables List

CheapItems  
ExpensiveItems  
LineItem  
Product  
SalesOrders  
public.barcode  
public.customer  
public.item  
public.orderinfo  
public.orderline  
public.stock

## Join List

Join0:      public.barcode.item\_id=public.item.item\_id

Join1:      public.orderinfo.customer\_id=public.customer.customer\_id

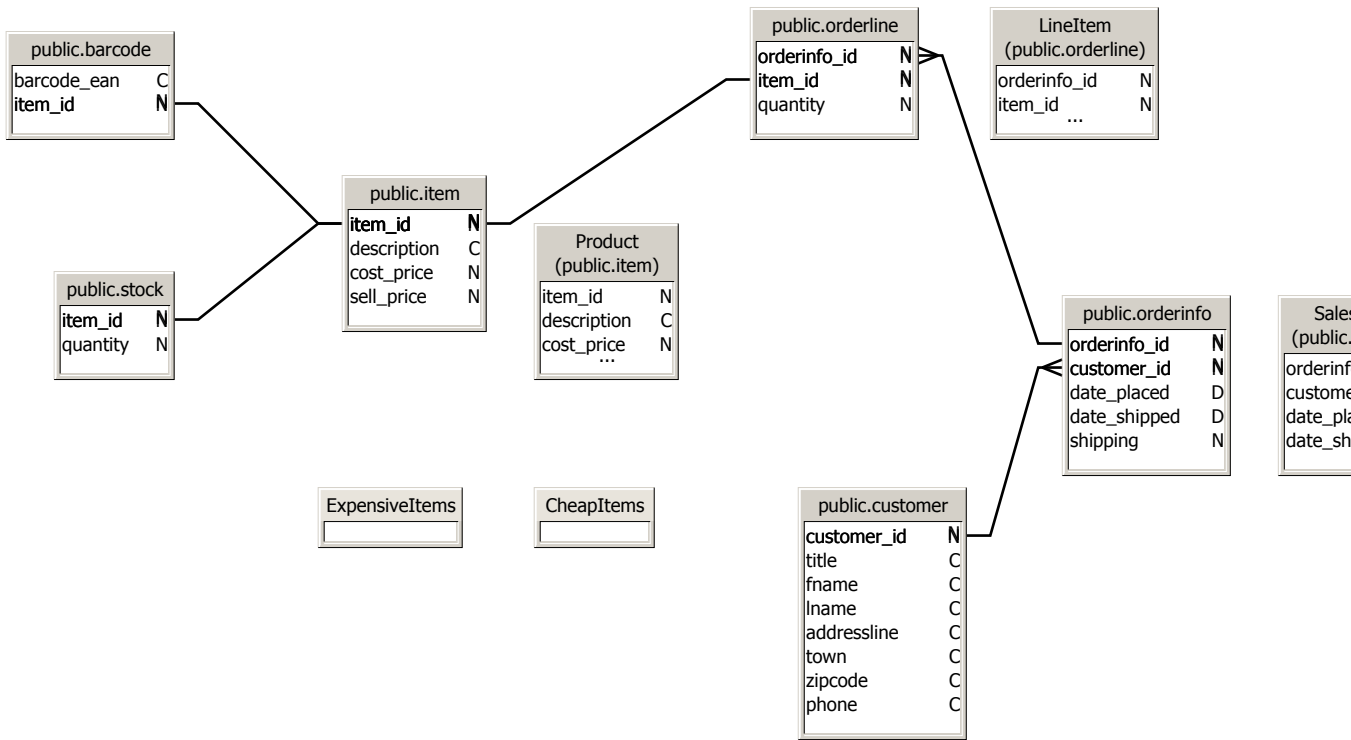
Join2:      public.item.item\_id=public.orderline.item\_id

Join3:      public.stock.item\_id=public.item.item\_id

Join4:      public.orderline.orderinfo\_id=public.orderinfo.orderinfo\_id

## Context List

ItemStock  
CustomerOrder



ine)
N
N

lic.orderinfo	
info_id	N
mer_id	N
_placed	D
_shipped	D
ing	N

SalesOrders (public.orderinfo)	
orderinfo_id	N
customer_id	N
date_placed	D
date_shipped	D
...	